

ADAPTED FROM:

FIELD SERVICE OF THE U.S. CALVARY IN TIME OF WAR  
BY MAJOR GENERAL GEORGE B. MCCLELLAN, USA 1861

BUGLE SIGNALS, CALLS & MARCHES  
BY CAPTAIN DANIEL J. CANTY, USA 1916

MUSIC AND BUGLING  
BY BOY SCOUTS OF AMERICA, 1968

SPECIAL THANKS TO:

STEVE WINGUS, BUGLERS' COUNSELOR 1970'S TO 1981

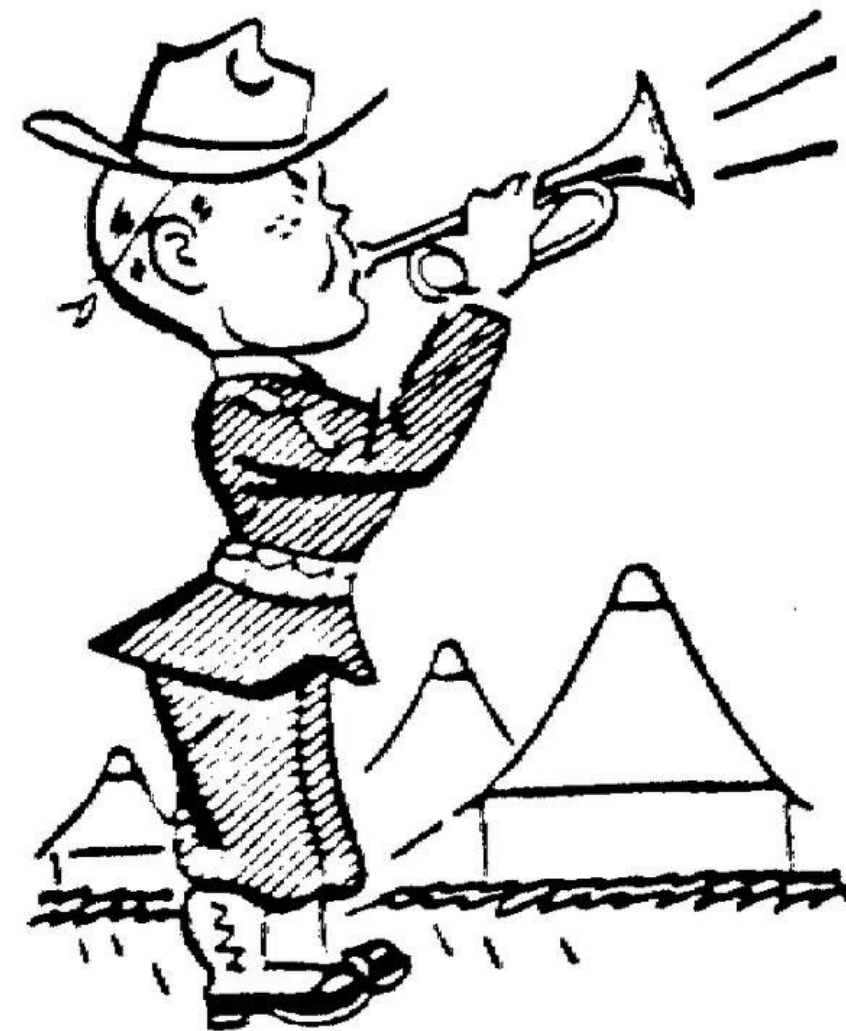
THE BOARD OF DIRECTORS OF THE SIERRA MADRE  
COLLEGE PREPARATORY SCHOOL  
A NOT FOR PROFIT EDUCATIONAL ORGANIZATION

COMPILED BY:  
BRYANT M. DUFFY, BUGLER '78 & '79

RE-COMPILED BY:  
KYLE M. SMITH, BUGLER '00 & '02

# BELLIS MUSIC CAMP

# BUGLER



**HANDBOOK**

*KEEPING THE CAMP ON TIME  
SINCE 1957*

## LAWRENCE BENJAMIN BELLS MEMORIAL JUNIOR HIGH SCHOOL MUSIC CAMP

BELLS MUSIC CAMP HAS A LONG HISTORY THAT HAS IMPACTED THE LIVES OF THOUSANDS OF PEOPLE. IT WAS FOUNDED IN 1957 BY LARRY BELLS, WHO, AT THE TIME, WAS THE MUSIC DIRECTOR AT LA CANADA JUNIOR HIGH SCHOOL. THE LA CANADA DONS MUSIC CAMP HAD ITS FIRST YEAR IN PACIFIC PALISADES. THERE, THE CAMP LIVED OUT OF OLD ARMY SURPLUS TENTS AND DRILLED AS A MARCHING BAND CAMP, GETTING THE STUDENTS READY FOR THE FALL. IN THE LATE '60'S, MR. BELLS JOINED THE STAFF OF ELIOT JUNIOR HIGH SCHOOL AND REOPENED THE CAMP IN 1970 AS THE ELIOT BAND CAMP. MR. BELLS DIED IN 1975 AND THE CAMP WAS RENAMED IN HIS HONOR.



LAWRENCE BELLS

IN 1976, HIS SON, RICHARD BELLS, A WELL-KNOWN ARRANGER AND FILM COMPOSER, BECAME CAMP DIRECTOR AND THE CAMP BEGAN INCLUDING YOUNG MUSICIANS FROM ALL OVER SOUTHERN CALIFORNIA. IN 1983, THE CAMP MOVED TO CANYON MEADOWS, NEAR LAKE HUGHES.



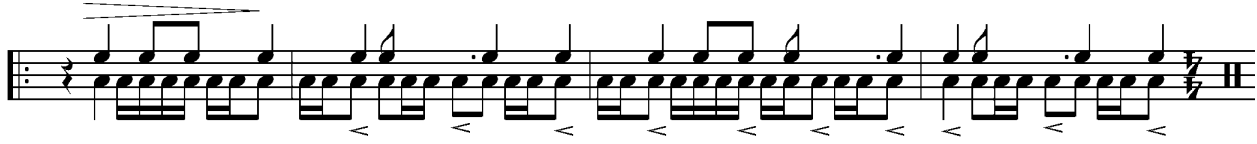
RICHARD BELLS

TODAY, OVER FIFTY YEARS AFTER THE FOUNDING OF THE CAMP, THE TRADITIONS REMAIN THE SAME. THE SOUNDS OF THE BUGLES AND CAMPERS MARCHING TO ASSEMBLY MIX WITH THE SOUNDS OF THE ORCHESTRA, WIND ENSEMBLE, AND LAUGHTER. THE CAMP CONTINUES AS IT WAS INTENDED: USING MUSIC TO BRING YOUNG PEOPLE TOGETHER AND ENRICH THE HUMAN EXPERIENCE.

## COLORS & RETREAT PROCEDURE

1. START IN BLOCK FORMATION – COLOR GUARD (DRUMS & BUGLE) IN BACK, COUNSELORS IN FRONT
2. DRUMMER STARTS PROCESSION WITH FOUR (4) TAPS – STEP OUT ON FIRST DOWNBEAT
3. COUNSELOR CALLS MARK TIME (POSSIBLY DURING CADENCE)
4. COUNSELORS LEAVE FOR FLAG
5. DRUM ROLL & BUGLE BLOW WHEN FLAG DESCENDS

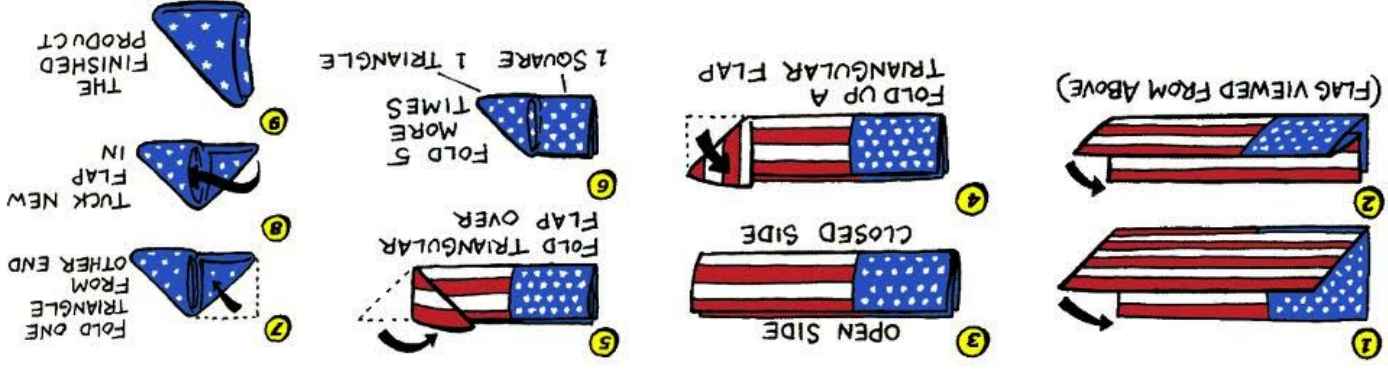
## PERCUSSION CADENCE



## HALT



## FOLDING THE FLAG



**BELLIS MUSIC CAMP  
DAILY SCHEDULE**

**TATTOO**

*Quick*

**TAPS**

*Slow*

| TIME     | BUGLE CALL(S)             | EVENT                 |
|----------|---------------------------|-----------------------|
| 7:00 AM  | REVEILLE                  | ARISE                 |
| 7:30     | INSPECTION                |                       |
| 7:50     | MESS CALL                 | MUSTER                |
| 7:55     | COLORS                    |                       |
| 8:00     |                           | BREAKFAST             |
| 8:45     | RECALL                    |                       |
| 9:00     | FIRST CALL                | PERIOD I (BAND/ORCH)  |
| 10:00    | RECALL                    |                       |
| 10:10    | SCHOOL CALL               | PERIOD II (THEORY)    |
| 10:50    | RECALL                    |                       |
| 11:05    | FIRST CALL                | PERIOD III (SYMPHONY) |
| 12:15 PM | RECALL                    |                       |
| 12:25    | MESS CALL                 | MUSTER                |
| 12:30    |                           | LUNCH                 |
| 1:15     | TO QUARTERS               | REST                  |
| 2:15     | FIRST CALL                | PERIOD IV (ENSEMBLES) |
| 3:15     | RECALL                    |                       |
| 3:25     | FIRST CALL, SWIMMING CALL | RECREATION            |
| 4:45     | WATERING CALL             | SHOWERS               |
| 5:30     | DINNER CALL               | MUSTER                |
| 5:35     | RETREAT                   | EVENING COLORS        |
| 5:40     |                           | DINNER                |
| 6:35     | RECALL                    |                       |
| 6:45     | FIRST CALL                | PERIOD V (REHEARSAL)  |
| 7:45     | RECALL                    |                       |
| 8:00     | ASSEMBLY                  | EVENING PROGRAM       |
| 9:00     | TATTOO                    | BRUSH TEETH           |
| 9:15     | TAPS                      | LIGHTS OUT            |



## ASSEMBLY



*Moderate*

*Moderate*

RETREAT (ARMY) EVENING COLORS (NAVY)

## RETREAT

| TIME     | BUGLE CALL(S)     | EVENT                  |
|----------|-------------------|------------------------|
| 7:30 AM  | REVEILLE          | ARISE LATE, YOU SLUGS! |
| 7:50     | MESS CALL         | MUSTER                 |
| 7:55     | COLORS            |                        |
| 8:00     |                   | BREAKFAST              |
| 8:45     | RECALL            | CAMP CLEANUP           |
| 9:15     | FIRST CALL        | CABIN CLEANUP          |
| 10:00    | INSPECTION        | FINAL INSPECTION       |
| 10:30    | FIRST CALL        | REHEARSAL              |
| 12:20 PM | RECALL, MESS CALL | MUSTER                 |
| 12:30    | RETREAT           | EVENING COLORS         |
| 12:35    |                   | LUNCH                  |
| 1:15     | RECALL            |                        |
| 1:30     |                   | WARM-UP                |
| 2:00     |                   | CONCERT                |

## LAST DAY SCHEDULE

| TIME    | BUGLE CALL(S) | EVENT                  |
|---------|---------------|------------------------|
| 3:30 PM |               | STAFF, C'S, JCS ARRIVE |
| 4:25    |               | TO CABINS              |
| 4:30    | FIRST CALL    | REGISTRATION           |
| 5:10    | MESS CALL     | MUSTER                 |
| 5:15    | RETREAT       | EVENING COLORS         |
| 5:40    |               | DINNER                 |
| 6:30    | RECALL        | AUDITIONS              |
| 7:45    | ASSEMBLY      | EVENING PROGRAM        |
| 9:30    | TATTOO        | BRUSH TEETH            |
| 9:45    | TAPS          | LIGHTS OUT             |

## FIRST DAY SCHEDULE

PERFORMANCE NOTES:

- TWO SIXTEENTH NOTES CAN BE PLAYED IN PLACE OF ANY SIXTEENTH NOTE TRIPLET (EXCEPT FOR THE PICKUPS TO FIRST CALL)
- BUGLE CALLS DO NOT HAVE TO BE PLAYED "OPEN" OR 1<sup>ST</sup> POSITION. (ALTHOUGH THEY ARE WRITTEN THAT WAY). ANY VALVE COMBINATION OR SLIDE POSITION CAN BE USED TO PUT IT IN A COMFORTABLE REGISTER.

### SWIMMING CALL

*Moderate*

Musical notation for the Swimming Call, consisting of two staves in 6/8 time. The melody features eighth notes and rests.

### WATERING CALL

*Quick*

Musical notation for the Watering Call, consisting of two staves in common time. The melody features eighth notes and triplets of eighth notes.

### DINNER CALL

*Moderate*

Musical notation for the Dinner Call, consisting of two staves in 2/4 time. The melody features eighth notes and triplets of eighth notes.

### REVEILLE

*Quick*

Musical notation for the Reveille, consisting of two staves in 2/4 time. The melody features eighth notes and quarter notes. The first staff is marked *Quick*, the second *Fine*, and the third *D.C. al Fine*.

### INSPECTION

MINDANAO

*Slowly*

Musical notation for the Inspection Mindanao, consisting of four staves in 6/8 time. The melody features eighth notes and quarter notes. The first staff is marked *Slowly*.

**TO QUARTERS**  
CALL TO QUARTERS

**SCHOOL CALL**

**FIRST CALL**

**RECALL**

**COLORS**  
TO THE COLOR (OR STANDARD)

**MESS CALL**